

NARA COLLECTION

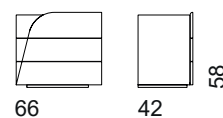
JETÉ 3031



DESCRIZIONE PRODOTTO / PRODUCT DESCRIPTION

La pelle morbida con cuciture a vista dei frontali dei cassetti si contrappone alla laccatura della struttura, i toni chiari si combinano con quelli scuri. Il comodino Jeté by BizzottoItalia con le sue forme allo stesso tempo, sinuose e squadrate presenta un design fatto di contrasti. L'eleganza dei frontali in cuoio sottolineati dalle cuciture a vista diventano il il rouge dell'ambiente notte.

The soft leather with exposed stitching on the drawer fronts contrasts with the lacquered structure, where light and dark tones blend harmoniously. The Jeté nightstand by BizzottoItalia, with its simultaneously sinuous and angular shapes, showcases a design built on contrasts. The elegance of the slanted leather fronts, highlighted by visible stitching, becomes the fil rouge of the bedroom space, evoking a sense of perfect aesthetic harmony.



3031
cm: 66 x 42 x 58 h.
In. : 26 x 16 ^{2/4} x 22 ^{3/4} h.
circa /about

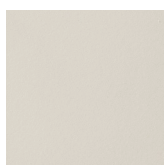
FINITURE DISPONIBILI / AVAILABLE FINISHES

Struttura /
structure

Frontali cassetti /
Leather drawer fronts



+

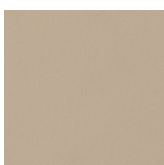


GG Graphite

Cuioio 84



+



SV Savana

Cuioio 62