

NARA COLLECTION

JETÉ 3030

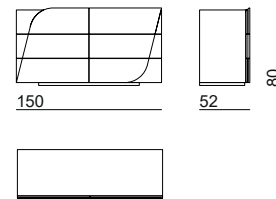


DESCRIZIONE PRODOTTO / PRODUCT DESCRIPTION

Il comò Jeté di BizzottoItalia con le sue geometrie a contrasto è un elemento d'arredo sinuoso e vibrante.

La pelle morbida con cuciture a vista dei frontali dei cassetti si contrappone alla laccatura della struttura, i toni chiari si combinano con quelli scuri. L'eleganza dei cassetti in cuoio dalle forme inclinate è sottolineata dalle cuciture a vista diventando il fil rouge dell'ambiente notte suggerendo una sensazione estetica di perfetta armonia.

The Jeté chest of drawers by BizzottoItalia, with its contrasting geometries, is a sinuous and vibrant piece of furniture. The soft leather with visible stitching on the drawer fronts contrasts with the lacquered structure, combining light and dark tones. The elegance of the leather drawers with inclined shapes is highlighted by the visible stitching, becoming the common thread of the night environment, suggesting an aesthetic sensation of perfect harmony.



3030
cm: 150 x 52 x 80 h.
In. : 59 x 20 ^{2/4} x 31 ^{2/4} h.
circa /about

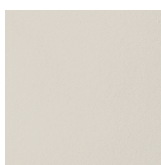
FINITURE DISPONIBILI / AVAILABLE FINISHES

Struttura /
structure

Frontali cassetti /
Leather drawer fronts



+

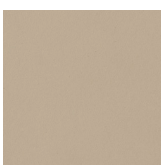


GG Graphite

Cuioio 84



+



SV Savana

Cuioio 62