

SYMPHONY - INFINITY COLLECTION

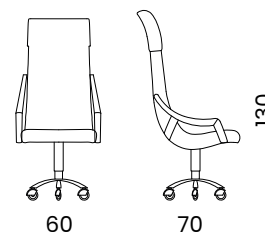
SYMPHONY 6048



## DESCRIZIONE PRODOTTO / PRODUCT DESCRIPTION

La poltrona girevole Symphony by BizzottoItalia. Con la sua seduta in morbida imbottitura e il rivestimento in pelle o tessuto, l'altezza regolabile e la base girevole, combina funzionalità e comfort in un design elegante. Una poltrona raffinata che aggiunge un tocco di classe e professionalità a qualsiasi ambiente ufficio.

*The Symphony swivel chair by BizzottoItalia. With its soft padded seat and upholstery in leather or fabric, adjustable height, and swivel base, it combines functionality and comfort in an elegant design. A refined chair that adds a touch of class and professionalism to any office environment.*



**6048**  
 cm: 60 x 70 x 130  
 In. : 23<sup>2/4</sup> x 27<sup>2/4</sup> x 51<sup>1/4</sup> h.  
 circa / about

## FINITURE DISPONIBILI / AVAILABLE FINISHES

Braccioli / *armrests*



SV Savana

CN Grigio cenere

SP Seppia

GG Graphite

BW Brown

Base



cromo / chrome

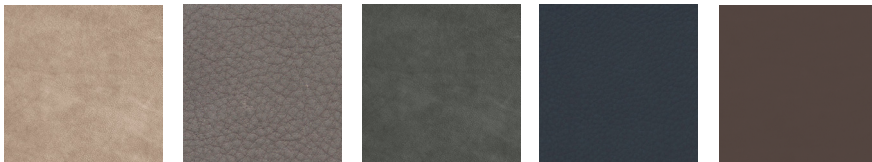
oro 24 KT /  
24 kT gold

Pelli / leathers



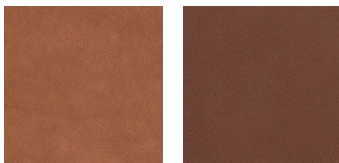
CAT.B2

New Classic 834    New Classic 971    New Classic 932    New Classic 823    New Classic 825



CAT.B2

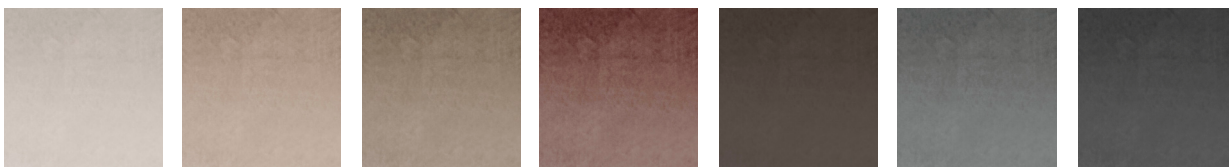
Nabuk 15    Nabuk 6    Nabuk KA 1712    Nabuk 18    Nabuk 10



CAT.B2

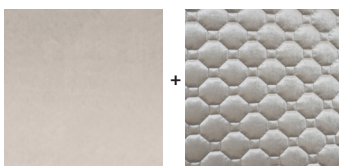
Mediterraneo 14    Mediterraneo 13

Tessuti / fabrics



CAT.B1

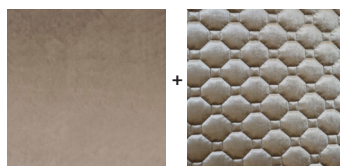
PV 070    PV 024    PV 073    PV 065    PV 022    PV 091    PV 092



+

CAT.B2

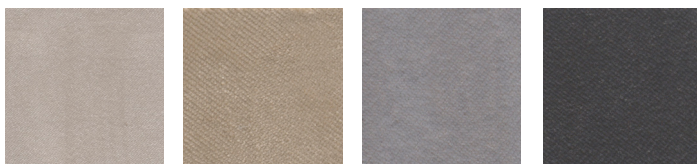
PV 070    PANDORA PV 070



+

CAT.B2

PV 070    PANDORA PV 073



CAT.B1

Velvety 091    Velvety 172    Velvety 092    Velvety 196



CAT.B1

\* Bonsai Reboot 071    Bonsai Reboot 075    Bonsai Reboot 052



CAT.B

\* Manny 3115    Manny 23 67    Manny 22 04

\* I colori dei prodotti, pelli, tessuti, finiture etc... sono indicativi / The colors of the products, leather, fabrics, finishings etc... are indicative

\* Bonsai Reboot sostituisce il tessuto Muse / Bonsai Reboot replace the Muse fabric.

\* Il tessuto Manny non passa il test ignifugo per la certificazione BS5852 / The fabric "Manny" does not pass the BS5852 fire resistance certification.